

Courtesy Of Ashley Dalglish Of MaxWell Polaris

## **\$209,900 - # 315 3670 139 Avenue Nw, Edmonton**

MLS® #E4204543

### **\$209,900**

2 Bedroom, 2.00 Bathroom, 794 sqft  
Condo / Townhouse on 0 Acres

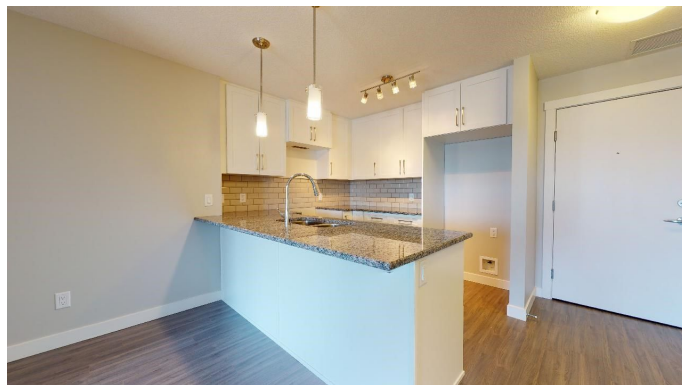
Clareview Town Centre, Edmonton, AB

Welcome to Landmark Homes' Velas 2' condo in Savida. This brand new 2 bed, 2 bath suite features in-suite laundry with extra storage, blinds, and luxury gypcrete floor soundproofing. The gorgeous oversized kitchen has stainless steel appliances, granite countertops, soft-close cabinetry, and eat-in dining. Enjoy outside living with a spacious balcony with BBQ gas line. 1 underground parking stall included, condo fees include water, elect, gas, heat, building maintenance, insurance and reserve fund. Next door to Clareview recreation center/Edmonton public library and a short walk to the LRT, bus stop, schools, and shops. A gorgeous home in a convenient location! 10/10.

Built in 2016

### **Essential Information**

MLS® #	E4204543
Price	\$209,900
Bedrooms	2
Bathrooms	2.00
Full Baths	2
Square Footage	794
Acres	0.02
Year Built	2016
Type	Condo / Townhouse



Sub-Type	Lowrise Apartment
Style	Single Level Apartment
Status	ACTIVE

### Community Information

Address	# 315 3670 139 Avenue Nw
Area	Edmonton
Subdivision	Clareview Town Centre
City	Edmonton
County	ALBERTA
Province	AB
Postal Code	T5Y 3N5

### Amenities

Features	Laundry-In-Suite, No Animal Home, No Smoking Home, Storage-In-Suite, Vinyl Windows
Parking Spaces	1
Parking	Underground

### Interior

Interior	Laminate Flooring
Interior Features	Dishwasher-Built-In, Dryer, Microwave Hood Cover, Refrigerator, Stove-Electric, Washer
Heating	Hot Water
Basement	None, No Basement
# of Stories	1

### Exterior

Exterior	Stone, Vinyl
Exterior Features	Flat Site, Golf Nearby, Landscaped, Playground Nearby, Schools, Shopping Nearby
Roof	Tar & Gravel
Construction	Wood Frame
Foundation	Concrete

### School Information

Elementary	epsb.ca
Middle	epsb.ca
High	epsb.ca

## **Additional Information**

Condo Fee            \$367

Listing information last updated on September 27th, 2020 at 3:16am MDT