

\$1,988,888 - 9231 Strathearn Drive Nw, Edmonton

MLS® #E4309518

\$1,988,888

4 Bedroom, 6.00 Bathroom, 3,666 sqft
Single Family on 0 Acres

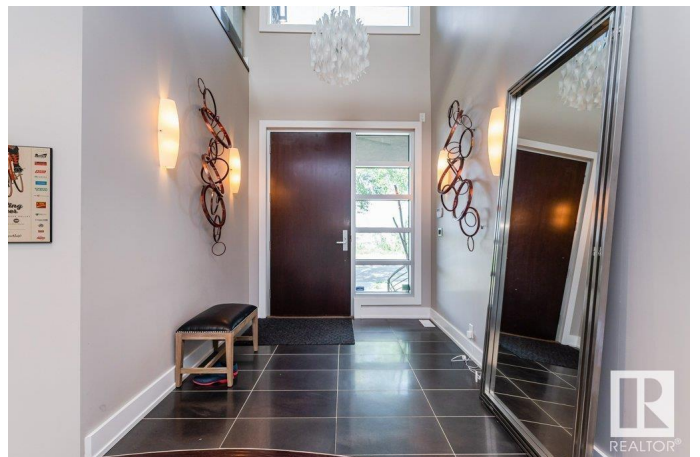
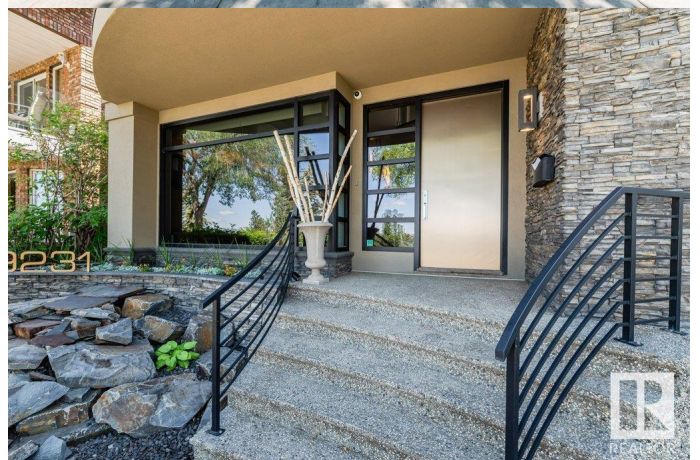
Strathearn, Edmonton, AB

Extraordinary architectural masterpiece situated on prestigious Strathearn Dr. Picturesque city views as you look out over the River Valley. A soaring open to above foyer invites you in, where the focal point is a custom curved cherry wood staircase, exquisite ledge stone tile feature wall & hand scraped walnut floors. The kitchen was curated for entertaining with chef-like built-in appliances, coveted modern designer cabinetry & gorgeous Bianco Carrara countertops. You'll find an executive-style office at the front of the home with distinguished millwork & tray ceilings. Soar up the staircase to the owner's suite featuring an extensive walk-in closet & opulent spa-like bath adorned with travertine tiles. A third living room & balcony provide views from every angle. Two additional bdrms with a thoughtfully designed jack/jill bath & upper floor laundry complete this floor. Continue to entertain downstairs with a full bar, theater room & 4th bdrm & baths. Oversized garage & manicured, private outdoor oasis.

Built in 2007

Essential Information

MLS® #	E4309518
Price	\$1,988,888



Bedrooms	4
Bathrooms	6.00
Full Baths	5
Half Baths	1
Square Footage	3,666
Acres	0.15
Year Built	2007
Type	Single Family
Sub-Type	Residential Detached Single Family
Style	2 Storey

Community Information

Address	9231 Strathearn Drive Nw
Area	Edmonton
Subdivision	Strathearn
City	Edmonton
County	ALBERTA
Province	AB
Postal Code	T6C 4E1

Amenities

Features	Air Conditioner, Carbon Monoxide Detectors, Ceiling 9 ft., Deck, Hot Water Natural Gas, Programmable Thermostat, Infill Property, Barbecue-Built-In, Ceiling 10 ft., Skylight, Wet Bar, See Remarks
Parking	Double Garage Detached
# of Garages	2

Interior

Interior	Carpet, Ceramic Tile, Hardwood
Interior Features	Dryer, Garage Opener, Hood Fan, Oven-Built-In, Stove-Countertop Electric, Washer, Wine/Beverage Cooler, Oven-Microwave, Vacuum Systems, Water Distiller, Window Coverings, Refrigerators-Two, Dishwasher-Two, Air Conditioning-Central, Alarm/Security System
Heating	Forced Air-2, In Floor Heat System
Bedrooms on Main Level	N
Has Basement	Yes
Basement	Full, Fully Finished
Fireplace	Yes
Fireplaces	Gas, Insert, Marble Surround, Masonry

of Stories 3

Exterior

Exterior Stone, Stucco

Exterior Features Fenced, Flat Site, Golf Nearby, Landscaped, Park/Reserve, Schools, Back Lane, River Valley View, Ski Hill, View City, See Remarks

Construction Wood Frame

Foundation Concrete

School Information

Elementary Rutherford School

Middle Vimy Ridge School

High McNally High School

Listing information last updated on November 29th, 2022 at 6:46am MST